

# Freiburg Global Exchange

International Office

Albert-Ludwigs-Universität Freiburg



**UNI  
FREIBURG**



© International Office  
University of Freiburg  
Fahnenbergplatz  
79085 Freiburg  
Germany

## ***Table of Content***

|  |    |
|--|----|
| ● University of Freiburg               | 4  |
| ● Study Areas and Program Options      | 6  |
| ● Key Dates                            | 7  |
| ● Entry Requirements                   | 7  |
| ● Exchange alumni – in their own words | 8  |
| ● How to Apply?                        | 9  |
| ● Orientation                          | 9  |
| ● Finance                              | 10 |
| ● Accommodation                        | 11 |
| ● Social Life                          | 11 |
| ● Eucor – The European Campus          | 12 |
| ● Freiburg University Map              | 13 |
| ● Helpful Websites                     | 14 |
| ● Notes                                | 15 |
| ● Contact                              | 16 |

# ● University of Freiburg

## → *At a Glance*

- 25.000 University students
- 18% International students
- 300 Degree programs
- 100 Research institutes and seminars
- 11 Faculties
- 1 Language Teaching Center  
("Sprachlehrinstitut" = SLI)



## → *Freiburg Global Exchange Program*

- Student exchange program (incoming/outgoing)
- Worldwide partner universities: Africa, America, Asia, Oceania
- Tuition fee waiver
- Service packages and support
- Accommodation guaranteed
- Language program included
- Baden-Württemberg STIPENDIUM



## ● Study Areas and Program Options



### → **Faculties**

- Faculty of Theology
- Faculty of Law
- Faculty of Economics and Behavioral Sciences
- Faculty of Medicine
- Faculty of Philology
- Faculty of Philosophy/Humanities
- Faculty of Mathematics and Physics
- Faculty of Chemistry, Pharmacy, and Earth Sciences
- Faculty of Biology
- Faculty of Environment and Natural Resources
- Faculty of Engineering

### → **Language Teaching Center - SLI**

- “Sprachlehrinstitut” = University’s Language Teaching Center
- Language courses during the semester
- Four-week intensive language courses before semester start
- Seminars at lower German language levels  
(Political Sciences, History, European Topics, Green City etc.)

### → **Global Exchange Options**

- German taught classes (all faculties)
- English taught classes (all faculties)
- German language courses (SLI)
- Seminars at lower German language levels A2-B2 (SLI)
- Duration: one semester or one academic year



## ● Key Dates

### Semester 1 (German winter semester)

1 October – 31 March

- Orientation: Mid-October
- Teaching period: End of October – Mid February
- Exams: At the end of teaching period

### Semester 2 (German summer semester)

1 April – 30 September

- Orientation: Mid-April
- Teaching period: End of April – Mid July
- Exams: At the end of teaching period



## ● Entry Requirements

### → *Eligibility*

- Interest in Germany
- English and/or German language skills
- Curiosity and openness!



### → *Language requirements*

- German A1 – for German language course participants
- German B2/C1 – for German taught classes
- English B2 – for English taught classes

### → *Limitations*

- Medicine, Pharmacy, Psychology
- University College (UCF)



# Exchange alumni...

"The University of Freiburg is one of the oldest universities in Germany, rich in tradition and one of the few universities in Germany that offer studies in Musicology at a very high level. At the university, you will encounter a broad variety of courses, good facilities and support services, friendly staff and students, all of which will help you to advance in your studies.

**Hiroyo**  
**Kinjo Gakuin University, Aichi**  
**Japan**

"I decided to study in Freiburg, because the university's Faculty of Law enjoys a very good reputation. The university is well organized and its staff very friendly and helpful. Located in the heart of Europe, Freiburg is a wonderful city in the midst of the black forest and also said to be one of the warmest cities in Germany. It was really easy for me to adapt to the local culture and I took home many treasured memories and new friendships. Studying at one of Germany's top universities was a dream come true and without doubt one of the best experiences of my life!

**Leonardo**  
**Lawyer at Sergio Müller Advogados**  
**Brazil**

"Freiburg is beautiful within itself for its landscape and architecture but what I found that its students and citizens of the university and city are very kind. They are very patient and understanding what I need help with my very minimal German skills; even to the point where they teach me everyday German terminology."

**Monika**  
**York University, Toronto**  
**Canada**

"Freiburg is a beautiful uni town nestled in the Black Forest, perfect for exchange with great student life and ski slopes around the corner! I loved how everything is reachable by bike - uni, bars, and the mountains. My German housemates became some of my best friends (and my German language skills skyrocketed). Looking back, my exchange in Freiburg was a transformative time of my life which I would do again in a heartbeat!"

**Ashwyn**  
**The University of Melbourne**  
**Australia**

"The Department of German at the University of Freiburg offers specific German courses targeted at international students, so called Seminars, which are conducted in German, but at a much slower pace than regular German courses. My professors here were always very supportive, patient and tried to make sure that every student could follow the class. Freiburg also offers many possibilities for fans of culture and nature alike. Its location close to Switzerland and France presents you with excellent opportunities to explore Europe.

**Geoffrey**  
**University of California, San Francisco**  
**USA**

...in their own words!



## ● How to Apply?

**Step 1:** Check if your home university has an agreement with University of Freiburg.

**Step 2:** Ask for application deadlines and hand in application at home university.

**Step 3:** Get nominated for the exchange by your home university.

**Step 4:** Receive helpful information and offer letter by University of Freiburg.

**Step 5:** Arrange your travel plans.

**Step 6:** Start study on exchange at the University of Freiburg.

**Step 7:** Get your transcript and arrange credit transfer with your home university.

## ● Orientation

### → Arrival Days

Welcome package for Freiburg Global Exchange students:



- Dorm key
- Health insurance
- Bank account
- Transportation ticket
- Freiburg Unicard
- Maps and other helpful information



### → Welcome Days

- Orientation sessions for international students
- Student tutors/buddy program
- Studying in Freiburg
- Tips & Tricks for everyday life in Freiburg
- International Welcome Dinner Buffet



## ● Finance

### → *Fees and costs*

- Tuition fee waiver at University of Freiburg
- Administration fee waiver at University of Freiburg
- Social fee (around 80,- Euro per semester)
- Living costs/monthly budget (recommended):  $\geq$  EUR 800

### → *Scholarships*

- Baden-Württemberg STIPENDIUM (exclusively for exchange students)
- DAAD Scholarship program



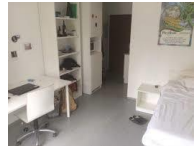
## ● Accommodation

### → *Student dorms*

- Guaranteed accommodation for exchange students
- Single apartments or single apartments in shared flats
- No meal plans included
- Dining halls and cafeterias available

### → *Private housing*

- Online database for landlords and tenants
- Different room types and size



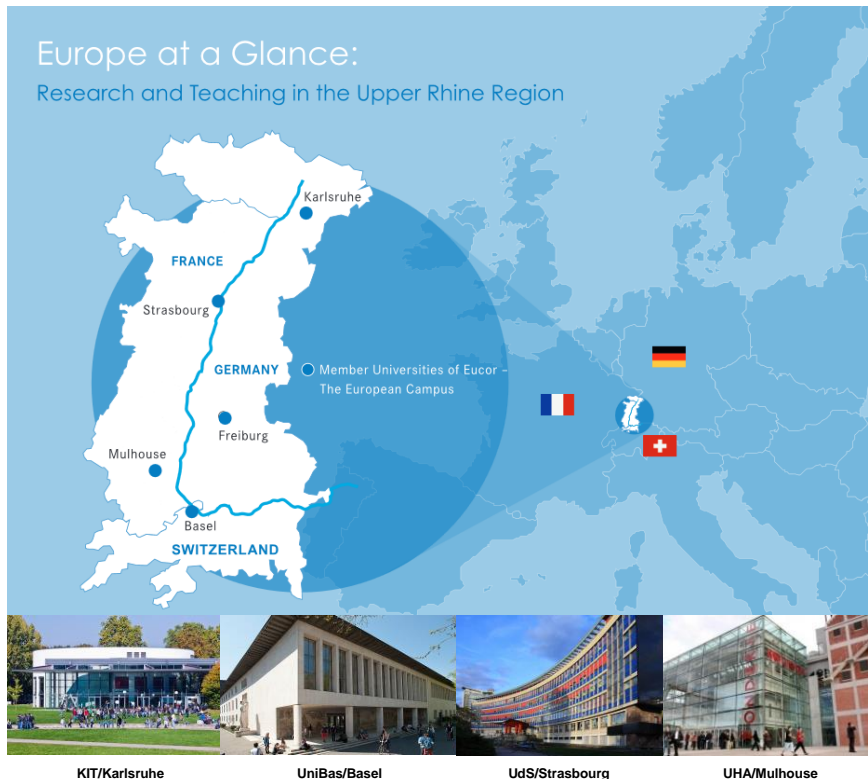
## ● Social Life



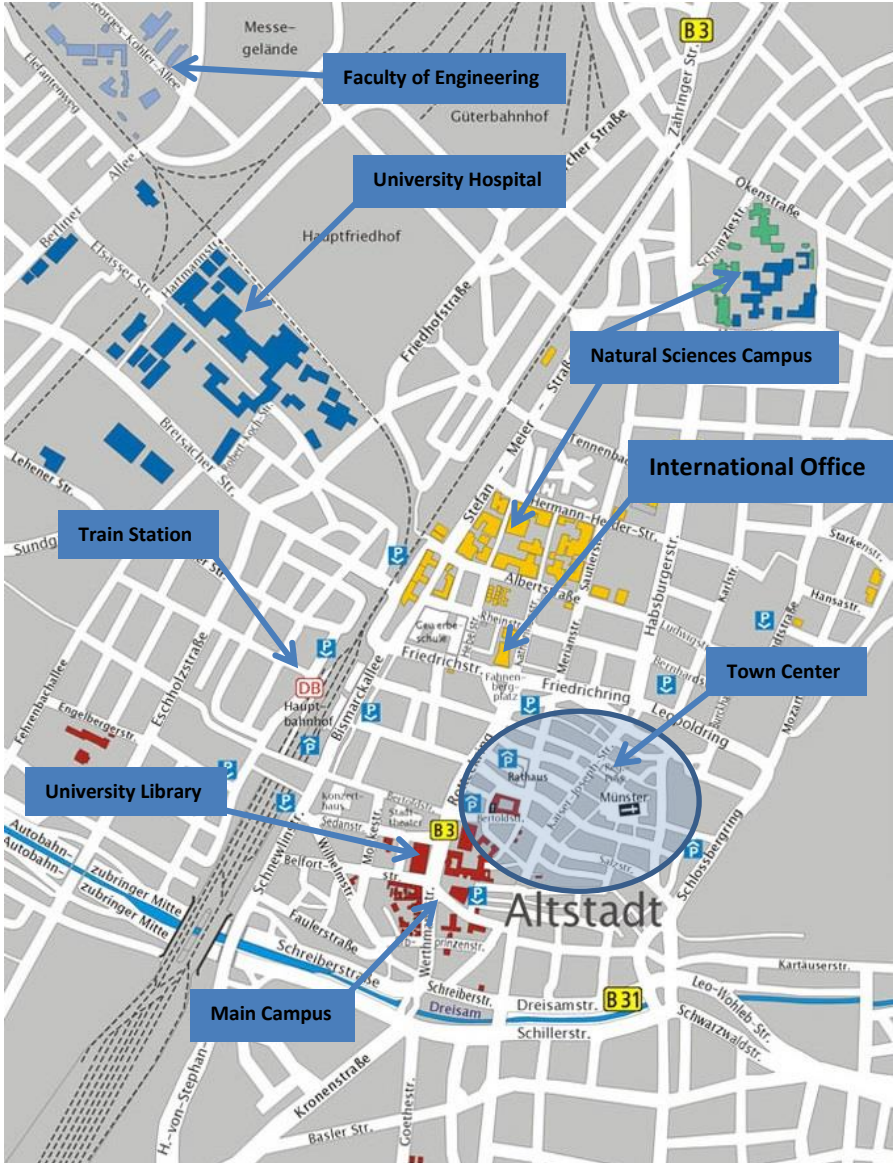
- International Club
- Field trips
- Tandem program
- Student clubs
- Events and parties
- University sports
- Music, bands, choirs
- Theatres, cinemas
- Museums
- Black Forest swimming, hiking, skiing
- and many more!

## ● Eucor – The European Campus

- European Confederation of the Upper Rhine Universities
- Established in 1989
- Basel, Freiburg, Karlsruhe, Mulhouse-Colmar, Strasbourg
- More than 100,000 students and 11,000 scientists and teaching staff
- Students can participate at partner universities' classes
- European Campus for teaching and research



# ● Freiburg University Map





## ● Helpful Websites

|  |  |
|--|--|
| <b>University of Freiburg:</b>           | <a href="http://www.uni-freiburg.de">www.uni-freiburg.de</a>                             |
| <b>International Office (IO):</b>        | <a href="http://www.international.uni-freiburg.de">www.international.uni-freiburg.de</a> |
| <b>Student Services Freiburg (SWFR):</b> | <a href="http://www.swfr.de/en/">www.swfr.de/en/</a>                                     |
| <b>Language Teaching Center (SLI):</b>   | <a href="http://www.sli.uni-freiburg.de">www.sli.uni-freiburg.de</a>                     |
| <b>Course Catalogue:</b>                 | <a href="http://www.campus.uni-freiburg.de">www.campus.uni-freiburg.de</a>               |
| <b>Eucor – The European Campus:</b>      | <a href="http://www.eucor-uni.org">www.eucor-uni.org</a>                                 |
| <b>City of Freiburg:</b>                 | <a href="http://www.freiburg.de">www.freiburg.de</a>                                     |
| <b>German Academic Exchange Service:</b> | <a href="http://www.daad.de">www.daad.de</a>   |
| <b>Baden-Württemberg STIPENDIUM:</b>     | <a href="http://www.bw-stipendium.de">www.bw-stipendium.de</a>                           |
| <b>Stipendienlotse (in German):</b>      | <a href="http://www.stipendienlotse.de">www.stipendienlotse.de</a>                       |
| <b>Local Transport (in German):</b>      | <a href="http://www.vag-freiburg.de">www.vag-freiburg.de</a>                             |
| <b>German Train:</b>                     | <a href="http://www.bahn.de">www.bahn.de</a>   |



# ● Notes

.....  
.....  
.....  
.....  
.....  
.....  
.....  
.....  
.....  
.....  
.....  
.....  
.....  
.....  
.....  
.....  
.....  
.....  
.....  
.....  
.....  
.....  
.....  
.....





***International Office***

*University of Freiburg  
Fahnenbergplatz  
79085 Freiburg  
Germany*



***We look forward to welcoming you  
to Freiburg soon!***

**<http://www.international.uni-freiburg.de>**  
**[global-incoming@io.uni-freiburg.de](mailto:global-incoming@io.uni-freiburg.de)**